

RW 6/7 Campus News

Jan 2018

Principal, Jeff Stanton
Associate Principal, Wyatt Stevens
Dean of Students, Kent Meister
Head Secretary, Renee Shrontz



3145 W Genesee St., Lapeer, MI 48446
Ph (810) 538-2334, Fx (810) 538-2350
Hours: Bldg 7am–5pm, Office 8am–5pm
rw.lapeerschools.org

The mission of Rolland Warner Middle School is to develop critical thinkers who have the necessary skills for future success.



Mark Your Calendar

January 3

- Students Return from Break

January 10

- Full Day Exams (no 0-Hour)

January 11 & 12

- Exams (Early Release at 1:34pm; No 0-Hour)

January 15

- End of 1st Semester for Traditional Students
- No School for Students (Teacher Records Day)

January 16

- 2nd Semester Schedules Begin

January 18

- Winter Wonderland Dance

January 24

- Lapeer Schools Opportunity Night 6-8:30pm at LHS

January 30

- Internet Safety from Detective David Vergison, Michigan State Police

January 31

- Rolland-Warner Scheduling Night for 2018-2019 School Year (current 6th grade students)

Principal's Message:

Welcome Back!

Welcome back after a nice long break! I hope everyone had time to enjoy the holidays. I know students and staff certainly did. Things get a little crazy in January here at Rolland-Warner. For starters, we have exams coming up next week **January 10-12**. For our 6th grade students (and their parents) this is entirely new. Please read this section of the newsletter carefully, particularly the part about there being **no zero hour (all three days) and early release (on Thursday and Friday)**.

Second Semester Schedules

Students will also be receiving their new schedules for the 2nd semester on **Tuesday, January 9, during iConnect**. For the most part, these remain the same because core classes (Science, Math, Social Studies, and ELA) are usually with the same teacher during the same hour. However, every year there are some hiccups with schedules such as students missing a class or something similar. Please be aware of this possibility and know that the counselors will be hard at work making sure any issues are corrected. The beginning of the 2nd semester is on January 16th for traditional students, **which is also the day they will start following their new schedules**. We ask that parents help students remember to bring their schedules with them that morning so they can follow them. Another good strategy is for students to snap a picture of their schedule with their phones so they have an electronic copy.

For year-round students, their 2nd semester started on January 3rd, except for their elective classes. Because year-round and traditional students share elective classes, we are unable to start the new electives until January 16, when traditional changes.

If you have any issues with or questions about schedules, please contact Mrs. Price (A-K) or Mrs. Tibbitt (L-Z) in the counseling department.

PBIS Event

Back on December 4th we began monitoring for our next PBIS event. This will be Laser Tag in the gym (date TBD) at the end of January/beginning of February. For students to earn entry to the event during their I-Connect time, they need to have zero tardies, zero missing work, and zero negative behaviors between December 4th and January 12th! We look forward to watching the students have a half hour of fun for doing what they are expected to do!

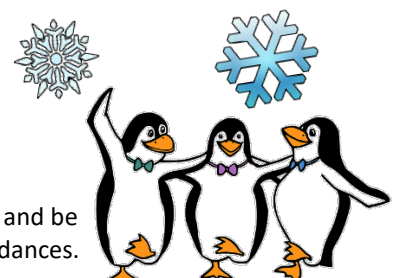


Student Council Winter Dance

Dance will be held on Thursday, Jan 18, from 4-6:30pm.

Tickets are now on sale now!
Tickets can be purchased during lunches for \$6 each!
Ticket price will increase to \$10 on January 18.

Students must show school appropriate behavior at the dance and be picked up promptly at 6:30pm to be able to attend any future dances.





PAC Meetings

The building has monthly PAC meetings which is an opportunity for parents to meet with the principal and talk about various things including curriculum, building vision, and the overall direction of RW moving forward. Please mark the following PAC dates on your calendar if you wish to attend. All meetings are scheduled to be the 2nd Wednesday of the month and begin at 9:30am to coincide with the start of the school day.

Jan 10 Feb 14 Mar 14 Apr 11 May 9

Washington DC Trip

The orders for Candy Bars and money are due on January 16 during lunches in order to have boxes for the first disbursement of Candy Bars on January 24 to be picked up from 4-5:30pm in the Events Entrance. If orders not turned in on January 16, you still have the opportunity to place an order for Candy Bars on February 8 during lunches and disbursement will be on February 21 from 4-5:30pm. Extra forms are in your child's social studies classroom and the office.

Don't forget, the online student registration and deposit deadline through BrightSpark Travel is February 1st and very few spots remain!



Winter Athletics Update

Winter Season II sports are under way and we are hopeful that practices will occur as scheduled and we can avoid some snow days, the first contest for Competitive Cheer is Saturday, January 20, and Boys' Basketball play their first games on Monday, January 22. Please remember Pay-to-Participate must be paid by January 19 for those that haven't already paid in order to participate in the first contests! Visit www.lapeerlightning.com for schedules so you can support the athletes!

2018-2019 School Year Scheduling

Counselors will begin working the schedule for the 2018-2019 school-year very soon for next year's 6th and 7th grade students. We start really early because this is such a complex process. Below are important dates for current RW students. **For current 7th grade students (next year 8th grade), Zemmer counselors will be visiting the last week of January or the first week in February. The specific dates are to be determined.**

- January 22 – Counselor visits to year-round 6th grade classrooms
- January 25 & 26 – Counselor visits traditional calendar 6th grade classrooms
- January 31 – Parent Information Night (7 to 8pm for all current 6th grade students)

Counselors will go through scheduling options with students during classroom visits, and then the parent night is available that will hopefully clarify and remaining questions that you may have.

A new part of the scheduling process this year will require any students who performed in the lowest 40th percentile in the Fall on the ELA MAP test will be taking the test again in January. Those students who are still in the lowest 40th percentile or who have a demonstrated need for ELA support will be placed into Guided Academics for ELA. This course will supplement the regular 7th grade ELA class to allow more time and support to master concepts. Students will be notified in the next couple weeks if they need to take the Winter MAP ELA test. Testing will take place between January 17 to January 26.

Student Handbook Notes

Each month a couple areas of the student handbook will be highlighted. Don't forget the full student handbook can be found under the "Parents & Students" tab on our website at <http://rw.lapeerschools.org/>

Bullying

A pattern of intentional inappropriate conduct that negatively impacts other students' educational, physical, or emotional well-being. It would include, but not be limited to, such behaviors as cyber bullying, hazing, stalking, intimidating, menacing, coercion, name-calling, taunting, making threats. Suspension up to ten days or expulsion.

Bullying is definitely a hot button issue right now, not just for students and staff, but in the media. It is also a very complicated problem with many layers to it. One of the hardest parts about "bullying" is actually determining what constitutes bullying, and helping students to understand what it looks like. Is this really bullying or are you having a disagreement/ argument with a friend?

The most important thing that students should know is that if they feel they are being bullied, they **MUST** contact an adult in the building. Students can fill out slips to see an administrator or counselor in the office at which point they will be brought in to discuss the problem. The administrative staff spends a great amount of time investigating complaints and working through solutions with students.

If your child has mentioned to you they feel like they are being bullied, please encourage them to see an administrator in the office. There are several methods and strategies we have to deal with these issues but we can't address them if we don't know they exist.



Exam Schedule

WED, Jan 10 – Full Day

THU, Jan 11 + FRI, Jan 12 – Early Release (9:24am - 1:34pm)

On Wednesday, Jan. 10 (full day), Thursday, Jan. 11 (Early Release), and Friday, Jan 12 (early release), Rolland-Warner will be on the exam schedule for all secondary schools. While not every class is having exams, many are and a special schedule is required to make this happen. Since we share teachers with Zemmer and LHS, we need to be aligned with their schedule. Additionally, we have 0-Hour and PLTW to account for. In short, there are only so many solutions and none of them are perfect.

Therefore, on these three days all 0 Hour classes are cancelled. All Rolland-Warner students will start at the standard 9:24 start time. Students who normally ride the early busses in for 0-Hour/PLTW, will instead ride the regular Rolland-Warner Busses, or can be dropped off from 9 to 9:15, on those three days. Individual reminders will be sent home directly with students, a phone blast will be done as a reminder, and the transportation department will send letters to all 0-hour students letting them know when and where they will be picked up by the busses.

Any students who have a 0-Hour at Rolland-Warner will take their 0-Hour exams on the Monday and Tuesday of that week in their normal 0-Hour class. Year-round students will already have taken exams, but will still follow this schedule. The only difference is they will have a longer class period for certain hours on those days.

Please note that on the early release days, lunches will not be served to students. They will want to make sure to eat breakfast on that day. It sounds like a long time, but because of the late start our students usually don't eat breakfast until 9am. Students will ride their regular busses home on these days so be aware they will be arriving earlier than a normal day. Students should be picked up at 1:34 in the car rider loop as is normal, just at an earlier time.

Below, I have a tentative schedule that explains where students should be on what days. If any changes are made to this schedule before the exams it will be communicated. Hopefully this year we don't have any snow days during exam week like we did last year. That really threw a monkey wrench into everything!

Substitute Teachers Needed

Attention Parents!
Are you or anyone you know looking for a flexible day job?

Consider being a Substitute Teacher. Minimum educational requirement is 90 Credit Hours towards a Bachelor's Degree.

Select the district and school building in which you want to work. Choose the days you are available. Pay Ranges from about \$65-\$85 per day.

Interested?

Go to subpass.com and complete the online application and the free online training modules at gcntraining.com.

Questions?

Check out our web site or call 866-782-7277.

January 10			
Period	Start	Stop	Time
All 0-Hours Cancelled. All students start at 9:24 at RW and will be transported to CFI if necessary.			
1 st Hour Exam 0/1 PLTW @CFI	9:24	11:24	2 Hr
3 rd Hour/iConnect	11:30	1:30	2:00
A Lunch	11:30	12:00	30 min
B Lunch	12:00	12:30	30 min
C Lunch	12:30	1:00	30 min
D Lunch	1:00	1:30	30 min
5 th Hour	1:35	2:00	25 min
6 th Hour Exam	2:05	4:05	2 Hr
* Students with PLTW for 1st/2nd Hours will be in cafeteria until 11:24			
January 11 – EARLY RELEASE @ 1:34pm (No Lunches Served)			
All 0-Hours Cancelled. All students start at 9:24 at RW and will be transported to CFI if necessary			
2 nd Hour Exam 1/2 PLTW @CFI	9:24	11:29	2:05
Break	11:29	11:34	5 minute
3 rd Hour Exam 3/4 PLTW @ CFI	11:34	1:34	2:00
January 12 – EARLY RELEASE @ 1:34pm (No Lunches Served)			
All 0-Hours Cancelled. All students start at 9:24 at RW and will be transported to CFI if necessary			
4 th Hour Exam	9:24	11:24	2:00
Break	11:29	11:34	5 minute
5 th Hour Exam	11:34	1:34	2:00
* Students with PLTW for 3rd/4th Hours will be cafeteria until 11:24			